

M2 WR



- Installation video
- Operating video
- Settings video

Preface

Congratulations

In choosing a VDO computer, you have opted for high-quality device with first rate technology.

To optimally use the computer, we recommend that you read this manual carefully. It contains full operating instructions and many useful tips.

We hope you enjoy cycling with your VDO computer.

Cycle Parts GmbH

Pack contents

First, please ensure that the contents of this pack are complete:

- 1 VDO computer
- 1 battery for the computer
- 1 universal handlebar bracket with cable and sensor
- 1 spoke magnet (clip magnet)
- Cable ties for attaching the bracket and the sensor
- 1 quick-start instruction manual

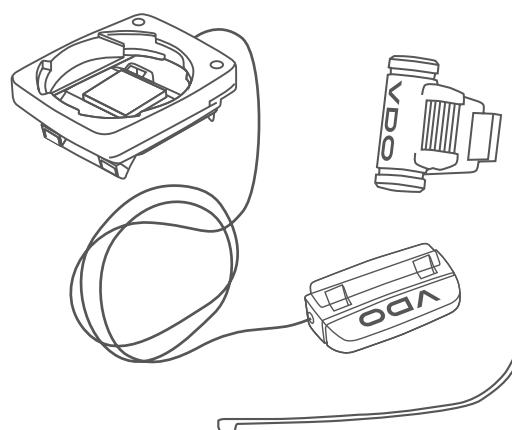
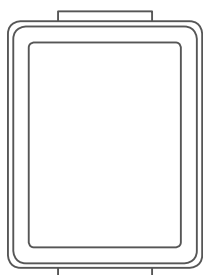


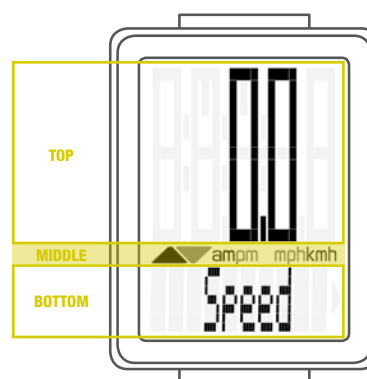
Table of contents

Display	03	Settings	09
Buttons	03	Language	09
Functions	04	Wheel circumference	10
Operation while cycling	05	Unit	13
Attaching the handlebar bracket and the sensor	06	Clock	14
Inserting the computer into the bracket	07	Speed indicator settings	17
Function testing	07	Total distance	18
Sleep mode	08	Total ride time	19
		Resetting trip data after the trip	21
		Battery status indicator	22
		Replacing the battery in the computer	22
		Terms of guarantee	23
		Troubleshooting	24
		Technical specifications	24

Display

The VDO M2 WR has a large, easy-to-read display that can be divided into three areas.

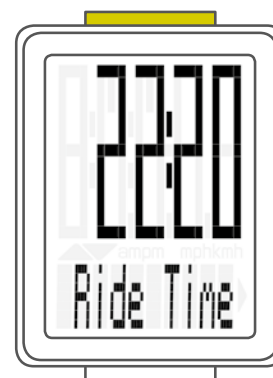
- The **top line** of the display shows the value for the selected function.
- The **middle line** displays “am” or “pm” if the 12-hour clock format is used. It also displays whether kmh or mph has been selected for the speed indicator. On the left of this line are arrows that indicate whether the current speed is above or below than the average speed.
- The **bottom line** of the display shows the name of the selected function in clear text.



Only **ONE** function at a time appears on the display. To return to the **speed** indicator from a selected function, e.g. **ride time**, press the **SET** button.

The **SETTINGS** can also be used to establish that the speed indicator is automatically displayed from all other functions after five seconds.

See page 17: Settings – speed indicator settings



Buttons

The VDO M2 WR has two buttons

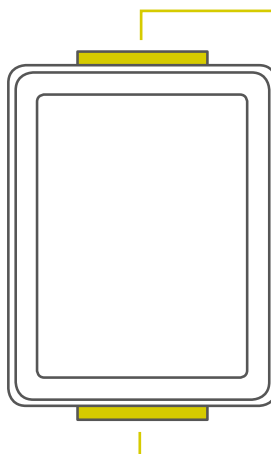
BIKE

In function mode:

- Access functions
- Reset trip data to zero (press and hold the button)

In setting mode:

- Scroll in the setting menu
- Change the data to be set



SET

In function mode:

- Return to the speed indicator from any display function
- Open setting mode (press and hold the button)

In setting mode:

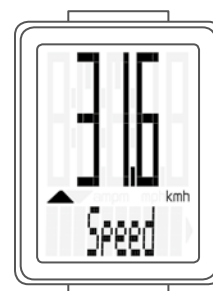
- Open the setting
- Confirm the setting once ready
- Exit setting mode and return to function mode

Functions

The VDO M2 WR has the following functions

Current speed

With a wheel circumference of 2,155 mm, the maximum possible speed is 199 kmh or 124 mph.



Current distance

The current distance counts up to 999.99 km or miles. If this maximum value is exceeded, the counter restarts the current distance calculation at zero.



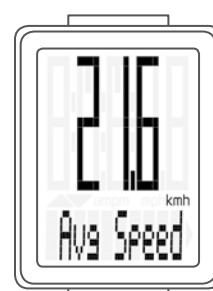
Current ride time

The current ride time counts up to 99:59:59 HH:MM:SS. If this value is exceeded, the ride time counter restarts at zero.



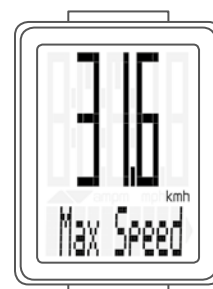
Average speed

for the current trip



Maximum speed

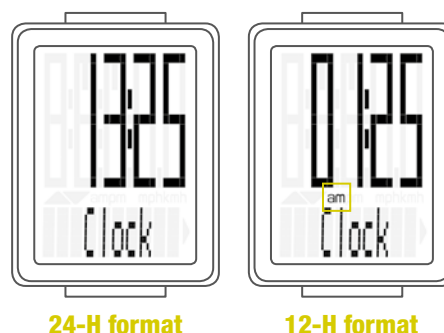
for the current trip



Functions

Current time

(in 24-h or 12-h format)

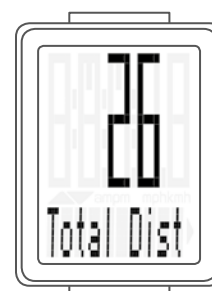


Total distance

(total for all day trips)

The total distance counts up to 99,999 km or miles. If this value is exceeded, the total distance counter restarts at zero.

If the unit is switched from miles to km and the conversion result is greater than 100,000 km, the counter is reset to zero.

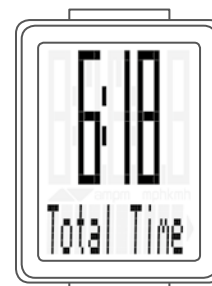


Total ride time

(total for all day trips)

The total ride time counts up to 9,999:59 HHHH:MM.

If this value is exceeded, the total ride time counter restarts at zero.



Operation while cycling

While cycling, the display functions can be accessed by pressing the **BIKE** button.

Pressing the **BIKE** button shows the next function on the display.

Only **ONE** function at a time is shown on the display.

To once again display the speed, the **SET** button **must be pressed**.

The **SETTINGS** can also be used to enable the automatic return to the speed indicator from all function displays.

See page 17: Settings – speed indicator settings



Attaching the bracket and the sensor

Start by attaching the sensor and the magnet.

STEP 1

Place the rubber shim under the sensor. Attach the sensor to the fork side that corresponds to the side on which you later want to attach the computer to the handlebars (right or left) using the cable ties supplied (loosely at first, do not pull tight just yet).

ATTENTION: the sensor mark on the sensor should point to the spokes. Depending on the space available, the sensor can be fitted to the front, inside or back of the fork.

STEP 2

Attach the spoke magnet to an outside spoke. The rod-shaped magnet core points toward the sensor with the VDO logo. Align the magnet with the sensor marking on the sensor at a distance of approx. 1-5 mm.

STEP 3

Align the sensor and the magnet in their final positions and fasten them in place: pull the cable ties tight and push the magnet in firmly.

STEP 4

Move the cable along the fork until it reaches the fork bridge. From there, wind the cable further along the brake line until it reaches the handlebars.

STEP 5

Decide whether you want to use handlebar or stem attachment and rotate the base of the handlebar bracket by 90° accordingly. To do so, undo the screws on the bracket, remove the foot and rotate it 90° then insert and tighten the screws again.

ATTENTION: do not overtighten the screws.

STEP 6

Guide the cable ties through the slot in the handlebar bracket, place around the handlebars or the stem and pull (do not pull tight just yet).

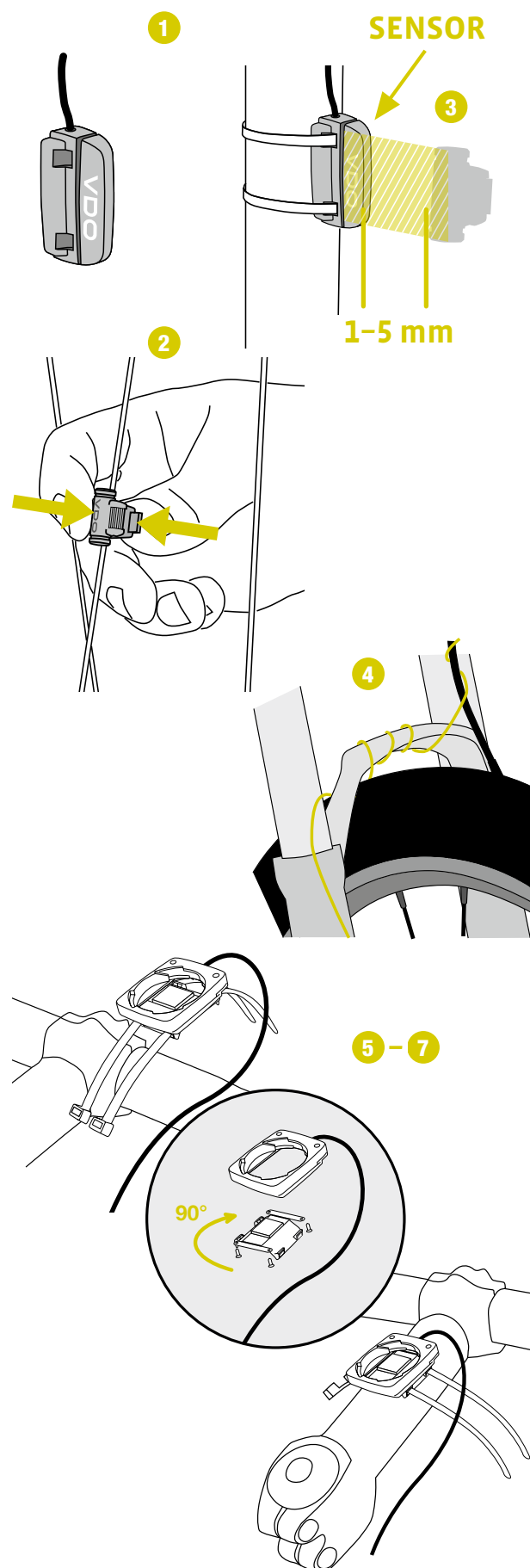
STEP 7

For handlebar attachment: align the computer angle to achieve optimum readability.

Now pull the cable ties tight.

Use clippers to snip off protruding cable ends.

A helpful attachment video can be found on our website.
www.vdocyclecomputing.com/service



Inserting the computer into the bracket

The VDO twist-click system securely connects the computer to the handlebar bracket.

How to insert the computer:

STEP 1

Place the computer into the bracket in a 10 o'clock position.

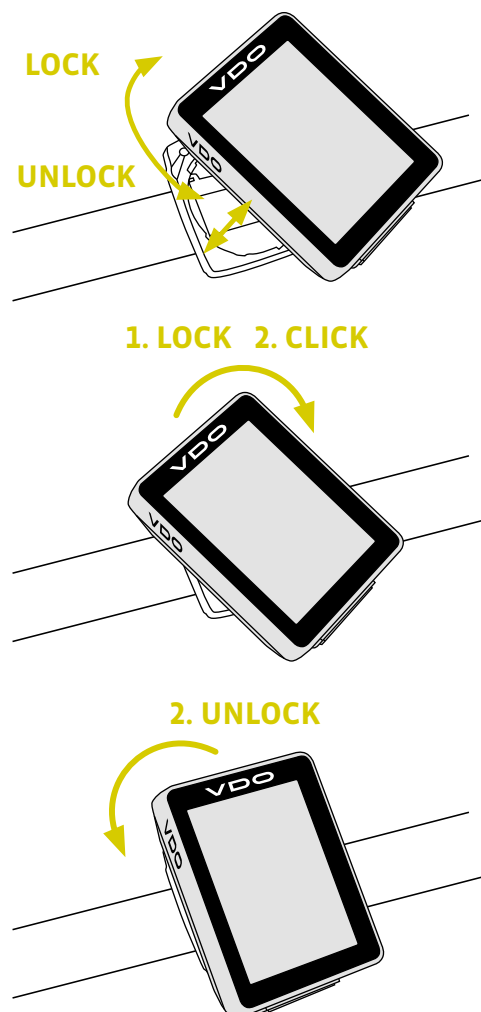
STEP 2

Rotate the computer to the right into the 12 o'clock position and click it into the bracket system. A noticeable resistance must be overcome to move it into place.

STEP 3

To remove the computer, rotate it to the left (without pushing or pulling).

Memory aid: **R**igid to the **R**ight, **L**oose to the **L**eft



Function testing

Once the sensor has been attached, check that it functions correctly.

How to test the computer:

- Insert the computer into the bracket.
- Lift and spin the front wheel.
- A speed should now be displayed on the computer.

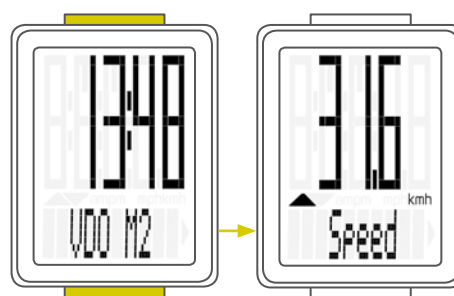
If no speed is displayed, there can be several reasons for this. The possible reasons are described in the **“Trouble-shooting”** section.

Sleep mode

If you take a break and the **M2 is in the bracket**, the computer switches to **sleep mode** after **five minutes**.

If you set off again after a break, the VDO M2 has an **auto-start function**.

The VDO M2 instantly switches back to the function mode and the current speed are once again displayed.



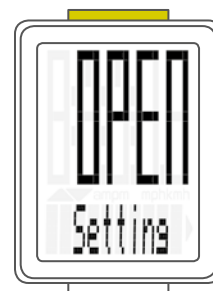
Settings – language

The following display languages can be selected for the VDO M2 WR:

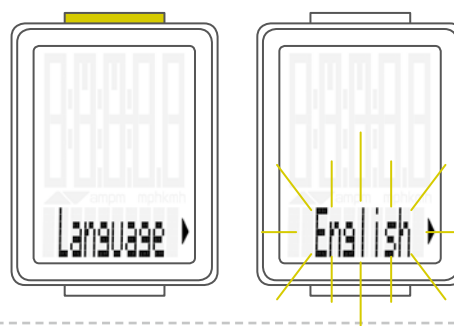
- German
- English
- French
- Italian
- Spanish
- Dutch
- Polish

Do this as follows:

Press and hold the SET button until the settings menu opens.



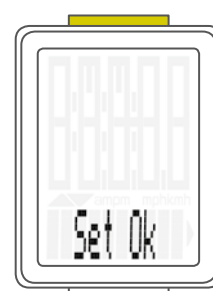
“Language” appears on the display. Press **SET** to open the language setting. English flashes.



You can now press the **BIKE button** to select a different language.



Press the **SET button** to confirm your language setting. The response **“Set Ok”** appears on the display.



If you want to configure further settings, press the **BIKE button** to access these.

If you do not want to configure any other settings, **press and hold the SET button**.

The settings menu closes.
The VDO M2 WR returns to function mode.



Settings – wheel circumference

You can set the roll circumference of your wheel on the VDO M2 WR.

The more accurate this setting, the more accurate your speed indicator and the measurement of the distance you have travelled.

You can find the values for your wheels in the wheel size table and set these in the device.

If your wheel size is not listed in the table, you can accurately measure the roll circumference.

This is done as follows:

STEP 1

Stand your bike up and position the front wheel so that the valve is directly on the ground. Ensure that the tyres are fully pumped up in accordance with the usage instructions. Mark the position of the valve on the ground with a line or adhesive strip.

STEP 2

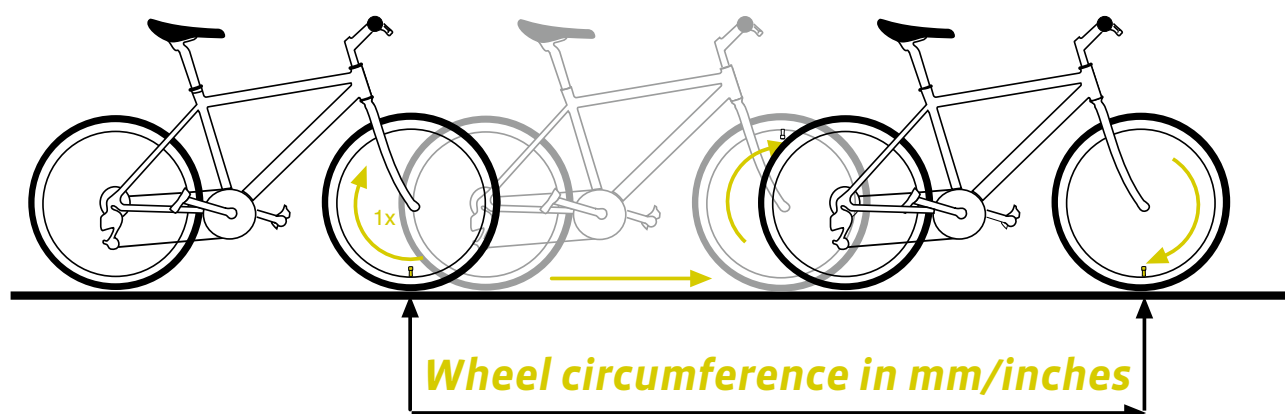
Now push your bike forwards in a straight line until the valve is back on the ground after one rotation.

Again mark the position of the valve on the ground with a line or adhesive strip.

STEP 3

The distance between the two marks corresponds to your wheel circumference or wheel size in millimetres.

Tyre size	ETRTO	KMH Wheel circumference in mm	MPH Wheel circumference in inches
16 x 1.75	47-305	1,272	50.1
20 x 1.75	47-406	1,590	62.6
24 x 1.75	47-507	1,907	75.1
26 x 1.5	40-559	2,026	79.8
26 x 1.75	47-559	2,070	81.5
26 x 1.9		2,089	82.2
26 x 2.00	50-559	2,114	83.2
26 x 2.10	54-559	2,125	83.6
26 x 2.25	57-559	2,145	84.4
26 x 2.35	60-559	2,160	85.0
26 x 2.40	62-559	2,170	85.4
28 x 1.5	40-622	2,224	87.6
28 x 1.6	42-622	2,235	88.0
28 x 1.75	47-622	2,268	89.3
29 x 2.10	54-622	2,295	90.3
29 x 2.25	57-622	2,288	90.1
29 x 2.40	62-622	2,300	90.5
650 B		2,100	82.6
700 x 18C	18-622	2,102	82.8
700 x 20C	20-622	2,114	83.2
700 x 23C	23-622	2,095	82.5
700 x 25C	25-622	2,146	84.5
700 x 30C	30-622	2,149	84.6
700 x 32C	32-622	2,174	85.6
700 x 38C	38-622	2,224	87.6



Settings – wheel circumference

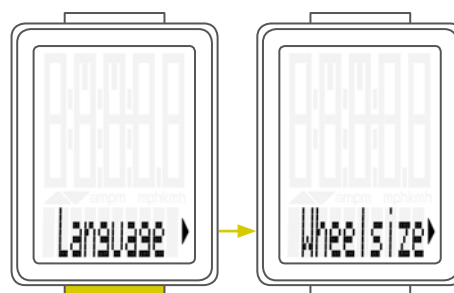
How to set your wheel circumference:

Press and hold the **SET button** until the settings menu opens.



“Language” appears on the display.

Press the **BIKE button** to scroll to the setting for the wheel circumference.

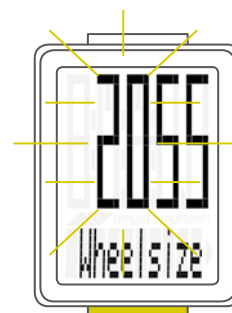


Press the **SET button** to open the setting for the wheel circumference.



The first two digits flash.

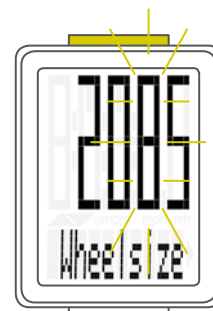
Press the **BIKE button** to set these digits to the desired value.



Press the **SET button** to confirm your setting.

The third digit now flashes and is ready to be set.

Press the **BIKE button** to set this digit.



Settings – wheel circumference

Press the **SET button** to confirm your setting.
The final digit on the right now flashes.

Press the **BIKE button** to set this digit.



Press the **SET button** to confirm your setting.
Your wheel circumference setting is now complete.

The response **“Set Ok”** appears on the display.

If you want to configure further settings,
press the **BIKE button** to access these.

If you do not want to configure any other settings,
press and hold the SET button.
The settings menu closes.

The VDO M2 WR returns to function mode.



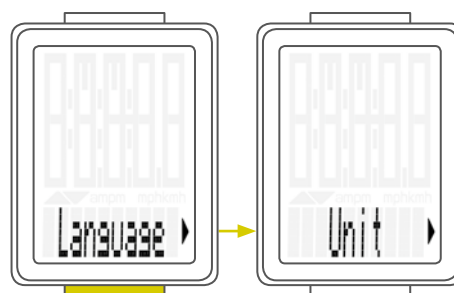
Settings – unit

Use the unit settings to specify whether the speed should be displayed in kmh or mph.

Press and hold the SET button until the settings menu opens.

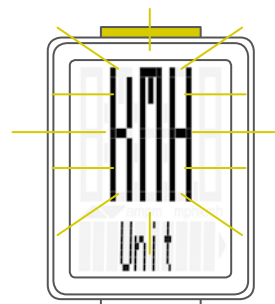


“Language” appears on the display.
Press the **BIKE button** to scroll to the setting for the unit.

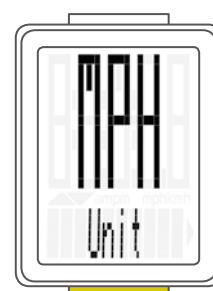


Press the **SET button** to open the unit setting.

“KMH” flashes in the top line of the display.



Press the **BIKE button** to change the unit to **“MPH”**.

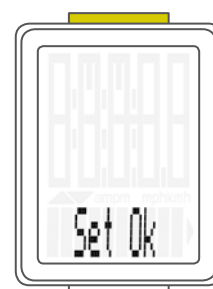


Press the **SET button** to confirm the setting.
The response **“Set Ok”** appears on the display.

If you want to configure further settings,
press the **BIKE button** to access these.

If you do not want to configure any other settings,
press and hold the SET button.
The settings menu closes.

The VDO M2 WR returns to function mode.



Settings – clock

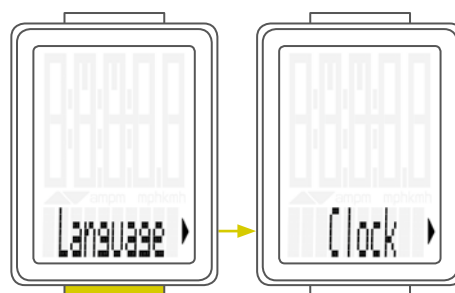
In the VDO M2 WR, you can set the clock in 12-hour AM/PM format or 24-hour format.

Press and hold the SET button until the settings menu opens.

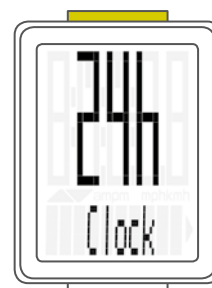


“Language” appears on the display.

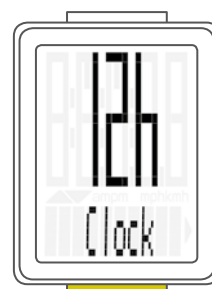
Press the **BIKE button** to scroll to the setting for the clock.



Press the **SET button** to open the setting for the clock.



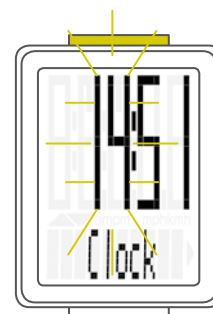
To switch to the 12-hour AM/PM format, press the **BIKE button**.



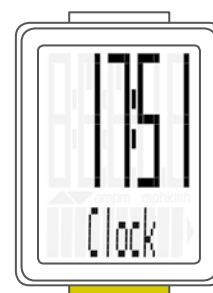
Settings – clock

Setting the time in 24-hour format

Press the **SET button** to confirm the selection “24”.
The hours now flash on the display.

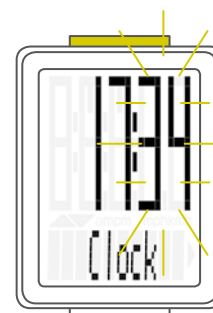


Press the **BIKE button** to set the hours.



Press the **SET button** to confirm the hour setting.

The minutes then flash.
Press the **BIKE button** to set the minutes.

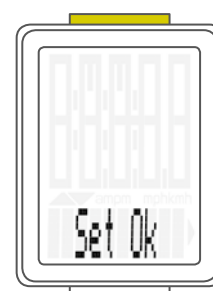


Press the **SET button** to confirm the minute setting.

The response “**Set Ok**” appears on the display.
If you want to configure further settings,
press the **BIKE button** to access these.

If you do not want to configure any further settings,
press and hold the SET button.
The settings menu closes.

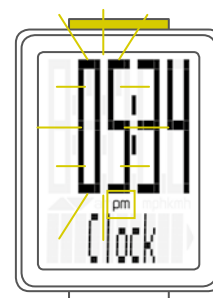
The VDO M2 WR returns to function mode.



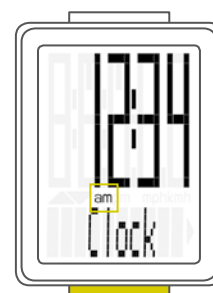
Settings – clock

Setting the time in 12-hour AM/PM format

Press the **SET button** to confirm the selection “12”.
The hours now flash and “am” or “pm” appears on the display.



Press the **BIKE button** to set the hours.
The display information changes from “pm” to “am”.



Press the **SET button** to confirm the hour/AM-PM setting.

The minutes now flash on the display.
Press the **BIKE button** to set the minutes.



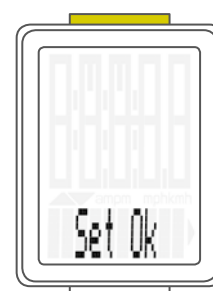
Press the **SET button** to confirm the minute setting.

The response “Set Ok” appears on the display.

If you want to configure further settings,
press the **BIKE button** to access these.

If you do not want to configure any other settings,
press and hold the SET button.
The settings menu closes.

The VDO M2 WR returns to function mode.

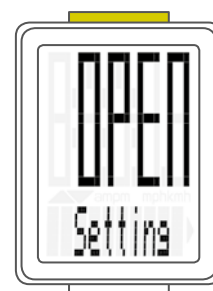


Settings – speed indicator settings

Here, you can set whether the speed indicator should automatically be displayed after a few seconds when in any other display function.

This is done as follows:

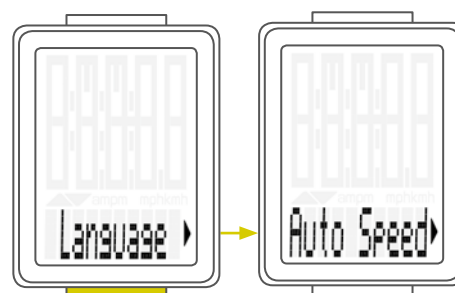
Press and hold the SET button until the settings menu opens.



“**Language**” appears on the display.

Press the **BIKE button** to scroll to the setting for the speed indicator.

“**Auto Speed**” appears on the display.



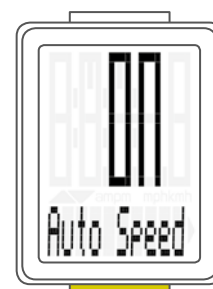
To access the setting, press the **SET button**.
The setting opens.

“**OFF**” means that the speed is **NOT** automatically shown on the display again after a few seconds.



Press the **BIKE button** to change the setting to “**ON**”.

ON means that the speed indicator should automatically be displayed after a few seconds when in any other display function.



Press the **SET button** to confirm the setting.
The response “**Set Ok**” appears on the display.

If you want to configure further settings,
press the **BIKE button** to access these.

If you do not want to configure any other settings,
press and hold the SET button.
The settings menu closes.



The VDO M2 WR returns to function mode.

Settings – setting the total distance

You can set the total distance ridden on the VDO M2 WR. For example, you can enter your data here at the start of a new cycling season.

ATTENTION: the M2 WR has a data memory. No data is lost when the battery is replaced.

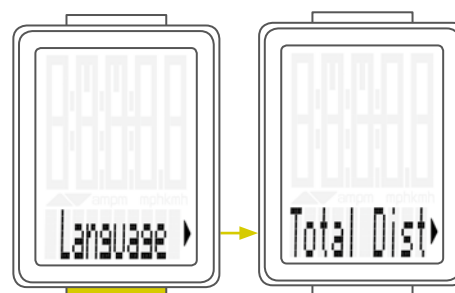
The process is as follows:

Press and hold the SET button until the settings menu opens.



“Language” appears on the display.

Press the **BIKE button** to scroll to the setting for the total distance.

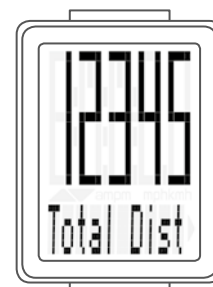
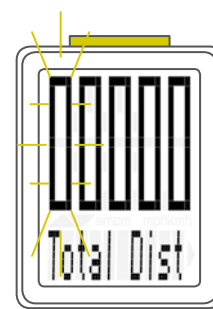


Press the **SET button** to open the setting. The left digit flashes.

Press the **BIKE button** to change the digit. Once this digit has been set, confirm the setting by pressing the **SET button**. The next digit starts to flash and is ready to be set.

Press the **BIKE button** to change this digit. Once this digit has also been set, confirm the setting by pressing the **SET button**. The next digit flashes.

Once all digits have been set, confirm the setting again by pressing the **SET button**.

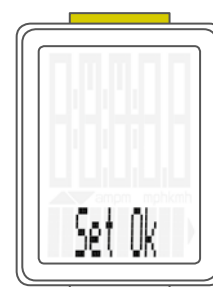


The response **“Set Ok”** appears on the display. The set value is stored.

If you want to configure further settings, press the **BIKE button** to access these.

If you do not want to configure any other settings, **press and hold the SET button**. The settings menu closes.

The VDO M2 WR returns to function mode.



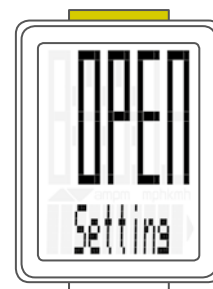
Settings – setting the total ride time

You can set the total ride time on the VDO M2 WR.
E.g. you can set your total ride time (total ride time for all trips) at the start of the new cycling season).

ATTENTION: the VDO M2 WR has a data memory.
No data is lost.

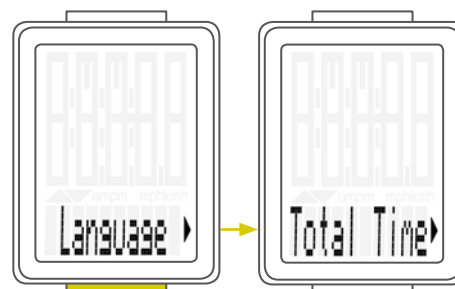
The process is as follows:

Press and hold the SET button until the settings menu opens.



“Language” appears on the display.

Press the **BIKE button** to scroll to the setting for the total ride time.



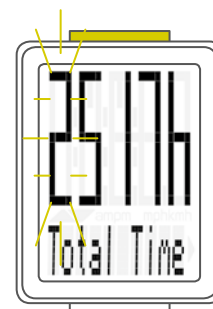
Press the **SET button** to open the setting for the total ride time.

The left digit of the hours setting flashes and is ready to be set.

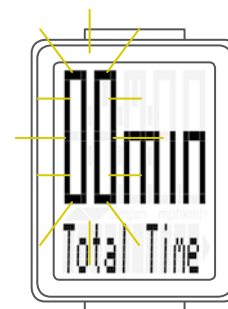
Press the **BIKE button** to set the value for this digit.
Press the **SET button** to confirm your setting.
The next digit on the left starts to flash and is ready to be set.

Press the **BIKE button** to set the value for this digit.

Press the **SET button** to confirm your setting.
Once you have set all four digits, confirm the setting again by pressing the **SET button**.



The minutes setting is then opened.



Settings – setting the total ride time

Press the **BIKE button** to set the minutes.
Once the minutes have been set, confirm the setting
by pressing the **SET button**.



The response **“Set Ok”** appears on the display.

If you want to configure further settings,
press the **BIKE button** to access these.

If you do not want to configure any other settings,
press and hold the SET button.
The settings menu closes.

The VDO M2 WR returns to function mode.



Resetting trip data after the trip

After each day trip, you can reset the data for this day trip to zero. The VDO M2 WR is then ready for the next day trip.

ATTENTION: your total distance (total number of kilometres ridden) and total ride time are not reset to ZERO.

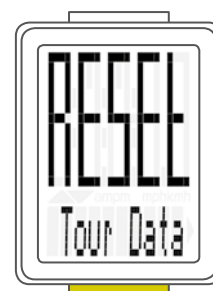
The process is as follows:

Press and **hold the BIKE button for a few seconds**. The text **“RESET Tour Data”** appears on the display.

If you **continue to hold down the BIKE button**, the trip data is now reset to zero.

The following data is reset to zero:

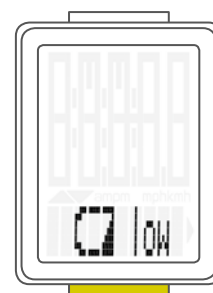
- Distance
- Ride time
- Average speed
- Maximum speed



Low battery indicator

The M2 WR has a low battery warning.
The text **“Computer low”** appears on the display.

Press the **BIKE button** to acknowledge this low battery warning.
You can keep using the cycle computer for approx. a week.
Replace the battery as soon as possible on seeing the low battery warning.



Replacing the battery in the computer

To ensure your cycle computer is fully functional,
we recommend **replacing the battery annually**.

ATTENTION: your settings, total distance and total ride time information remain stored when you replace the battery.
NO data is lost.

You need a 3 V 2032 battery.
We recommend using a branded battery from Sony, Panasonic, Varta or Duracell.

The process is as follows:

STEP 1

Use a coin to remove the battery compartment cover.

STEP 2

Remove the dead battery.

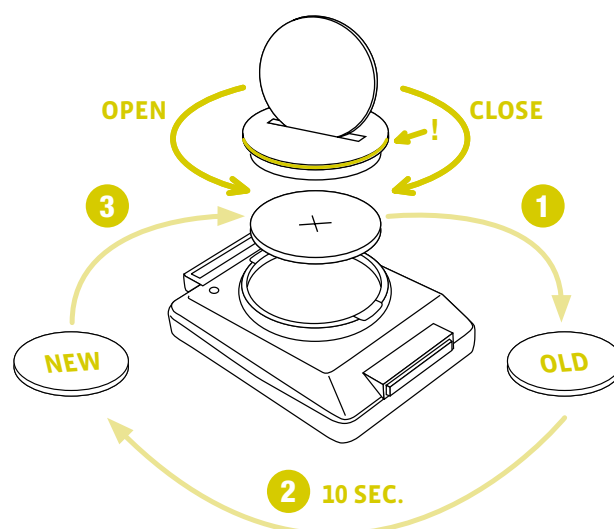
ATTENTION: Wait for **10 seconds** before inserting the new battery. The electronics need this time to recognise that the battery is being changed.

STEP 3

Insert the battery into the computer housing with the +pole up.
Ensure that the battery is not tilted.
Ensure that the rubber seal lies smoothly on the lid of the battery compartment.

STEP 4

Insert the battery compartment cover into the opening and use a coin to turn it to right as far as it will go.



Terms of guarantee

VDO Cycle Parts offers a **2-year guarantee** on your VDO computer, **starting from date of purchase**. This guarantee covers material and processing defects on the computer itself, the sensor/transmitter and the handlebar bracket. Cables, batteries and mounting materials are not covered by the guarantee.

The guarantee is only valid if the affected components have not been opened (exception: computer's battery compartment), no force has been used and there is no sign of wilful damage.

Please store the purchase receipt in a safe place as it must be submitted in the event of a complaint.

If your complaint is legitimate, you will receive a comparable replacement device. You are not entitled to a replacement of the identical model if the model in question is no longer in production due to a model change.

Please contact the dealer from whom you purchased the device for all complaints and guarantee claims. Alternatively, send your complaint directly to:

Cycle Parts GmbH

Le Quartier Hornbach 13
67433 Neustadt/Weinstrasse

If you have any technical questions, please do not hesitate to call our hotline on:

+49 (0) 63 21- 95 82 7 - 10

+49 (0) 63 21- 95 82 7 - 18

**Our telephone hotline is available to assist you
between the hours of
10:00-12:00 and 15:00-17:00,
Monday to Friday**

Additional technical information is available at:
www.vdocyclecomputing.com

We reserve the right to make technical changes in the course of further development.

Troubleshooting

Error	Possible cause	Correction
Half segments on the display (e.g. after a battery change)	Computer software not running correctly after battery change	Remove and re-insert the battery
No speed displayed	Distance from sensor to magnet too great	Correct the sensor and magnet positions
No speed displayed	Computer not properly clicked into the handlebar bracket	Insert the computer into the handlebar bracket and rotate it as far as possible ("click")
No speed displayed	Wheel circumference is not correctly set or is at zero	Set the wheel circumference
No speed displayed	Battery in the transmitter is dead	Replace the battery in the transmitter
Display becomes weak	Battery dead	Check the battery, replace if nec.

Technical specifications

Computer:

Approx. 49 H x 38 W x 16 D mm

Display:

H approx. 39 mm, W approx. 29 mm

Computer weight:

Approx. 28 g

Handlebar bracket weight:

Approx. 10 g

Computer battery:

3V, type 2032

Computer battery service life:

Approx. 1 year (approx. 10,000 km/6,000 mi)

Temperature indicator range on the display:

-20°C to +70°C/ -4°F to +158°F

Speed range for wheel size 2,155 mm:

Min 2.5 km/h,

Max 199 km/h

Ride time measurement range:

Up to 99:59:59 HH:MM:SS.

Trip distance odometer measurement range:

Up to value 999.99 km or mi

Total km measurement range:

Up to value 99,999 km or mi

Total ride time measurement range:

9999:59 HHHH:MM

Wheel circumference setting range:

From 100 mm to 3999 mm (3.9 to 157.4 inches)

Correct disposal of this product (electrical waste)



(To be used in EU countries and other European countries with a separate collection system). The labelling on the product and the relevant literature indicates that it must not be disposed of with normal household waste at the end of its service life. Please dispose of this device separately to other waste so as not to harm the environment or human health through uncontrolled waste disposal. Recycle the device to promote the sustainable reuse of material resources. Private users should contact the retailer from whom they purchased the product or the responsible authorities to find out how they can recycle the device in an environment-friendly manner. Commercial users should contact their suppliers and consult the conditions of the sales agreement. This product must not be disposed of with other commercial waste.

EU declaration of conformity

We, CYCLE PARTS GmbH, Le Quartier Hornbach 13, D-67433 Neustadt/Weinstraße, declare that when used as intended, the VDO cycle computer VDO M2 WR complies with the essential requirements established in the CE Directives.

The declaration of conformity can be found at:
www.vdocyclecomputing.com.



Neustadt, October 2013



Cycle Parts GmbH

Le Quartier Hornbach 13

67433 Neustadt/Weinstrasse (Germany)

+49 (0) 63 21- 95 82 7 - 0

www.vdocyclecomputing.com