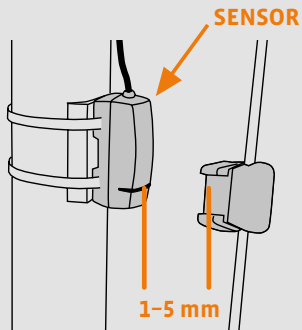
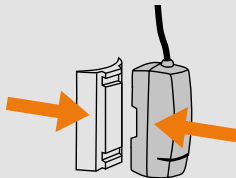
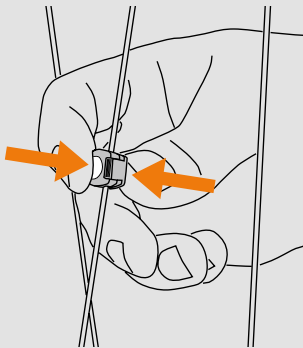


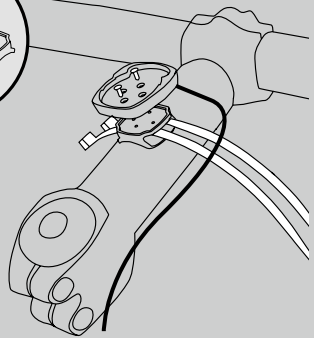
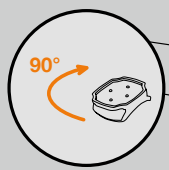
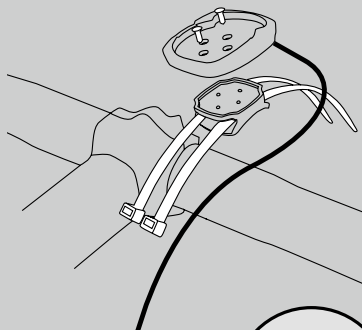
SERIES-X

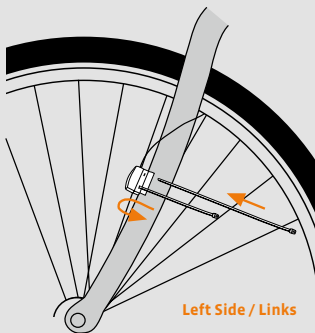
VDO  
CYCLECOMPUTING



*Picturebook*





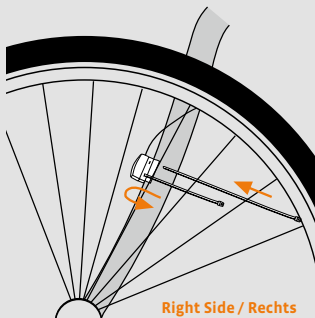


Left Side / Links

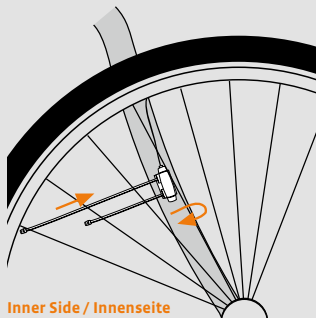


Left Side / Links

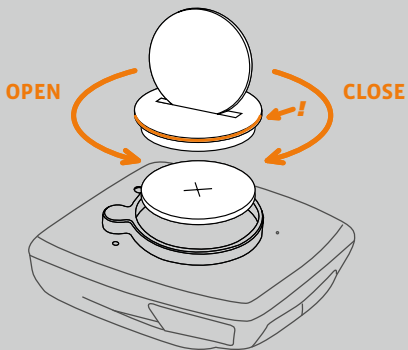
OR / ODER

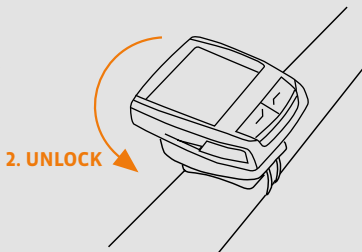
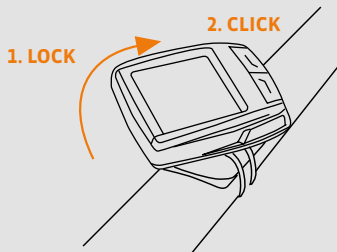
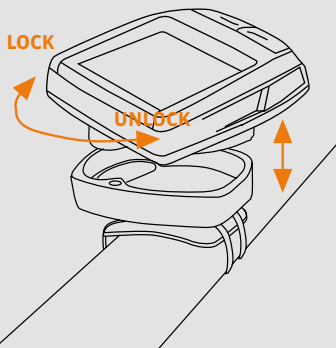


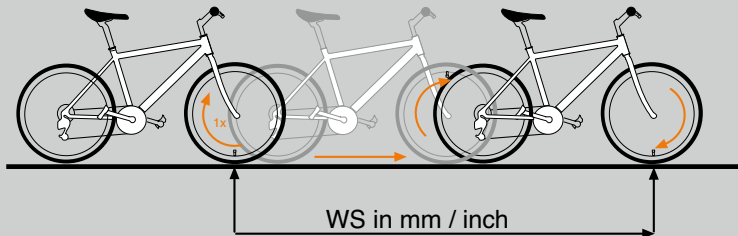
Right Side / Rechts



Inner Side / Innenseite







Tire size	WS in mm KMH	WS in inch MPH	Tire size	WS in mm KMH	WS in inch MPH
47-305 16 x 1,75	1272	50,1	37-590 26 x 1 3/8	2105	82,9
47-406 20 x 1,75	1590	62,6	20-571 26 x 3/4	1954	76,9
34-540 24 x 1 3/8	1948	76,7	32-630 27 x 1 3/4	2199	86,6
47-507 24 x 1,75	1907	75,1	40-622 28 x 1,5	2224	87,6
23-571 26 x 1	1973	77,7	47-622 28 x 1,75	2268	89,3
40-559 26 x 1,5	2026	79,8	40-635 28 x 1 1/2	2265	89,2
44-559 26 x 1,6	2051	80,7	37-622 28 x 1 3/8	2205	86,8
47-559 26 x 1,75	2055	80,9	18-622 700 x 18C	2102	82,8
50-559 26 x 1,9	2060	81,1	20-622 700 x 20C	2114	83,2
50-559 26 x 1,9	2060	81,1	23-622 700 x 23C	2133	84,0
50-559 26 x 1,9	2060	81,1	25-622 700 x 25C	2146	84,5
n/a 26 x 1,95	2070	81,5	28-622 700 x 28C	2149	84,6
54-559 26 x 2,00	2075	81,7	32-622 700 x 32C	2174	85,6
n/a 26 x 2,1	2080	81,9	37-622 700 x 37C	2205	86,8
57-559 26 x 2,125	2133	84,0	40-622 700 x 40C	2224	87,6



[www.cyclecomputing.com](http://www.cyclecomputing.com)

CP-X-Kabel-PB/1

**SERIES-X**